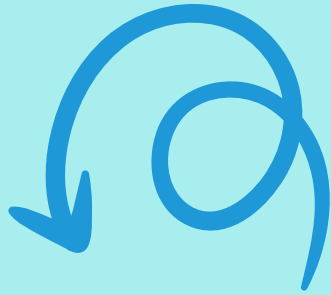


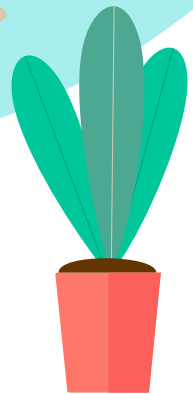
coa

SUMMER CAMP

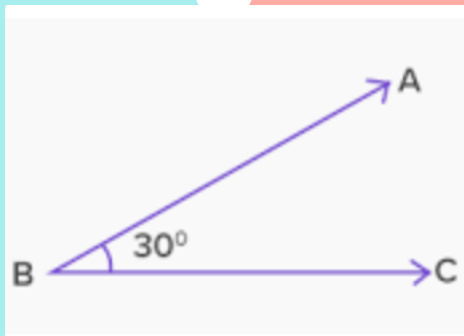
Math Club



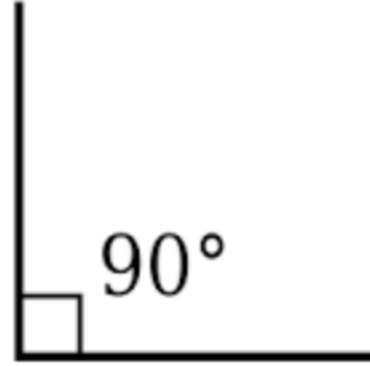
Teacher: Kira Lou
Students: Grade 2-3



An **acute angle** ("acute" meaning "small") is an **angle** smaller than a right **angle**. The range of an **acute angle** is between 0 and 90 degrees. Obtuse **angles** can be from 90 degrees to 180 degrees.

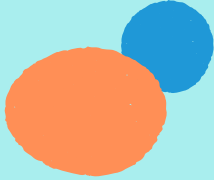


Right angle



In geometry and trigonometry, a right angle is an angle of exactly 90° , corresponding to a quarter turn. If a ray is placed so that its endpoint is on a line and the adjacent angles are equal, then they are right angles.

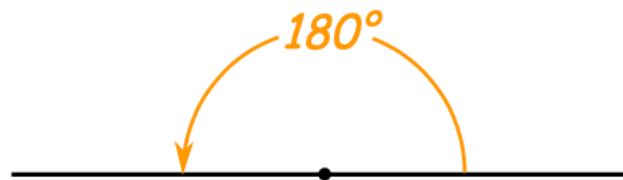




An **obtuse angle** ...” ... An **obtuse angle** has a measurement greater than 90 degrees but less than 180 degrees. However, A reflex **angle** measures more than 180 degrees but less than 360 degrees.



A straight angle is 180 degrees



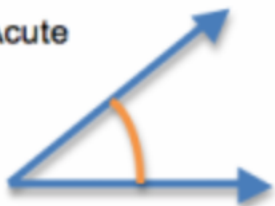
This is a straight angle

Flat Angle

Different Angles

01

Acute



02

Right



03

Straight



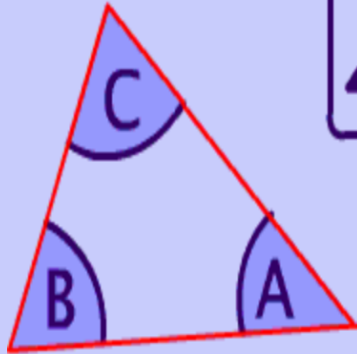
04

Obtuse

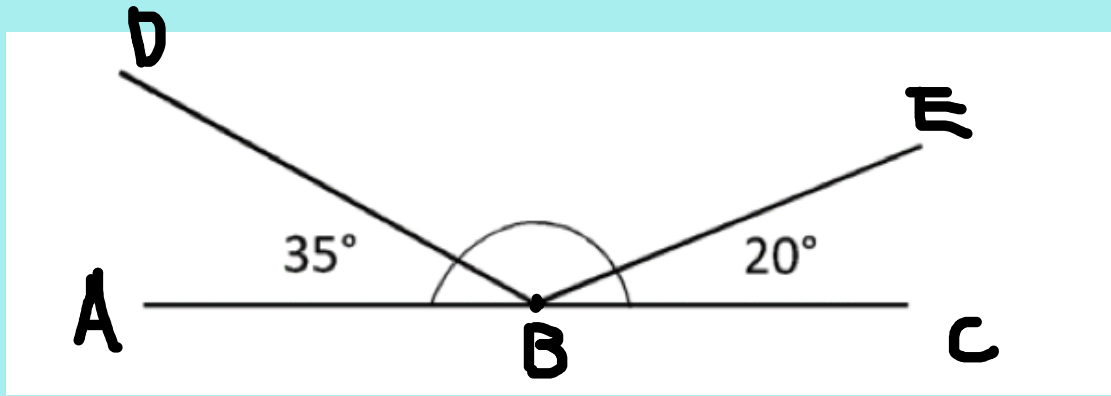


Triangles are one of the most fundamental geometric shapes and have a variety of often studied properties including:

Rule 1: Interior Angles sum up to 180° #



$$\angle A + \angle B + \angle C = 180^\circ$$



$$180^\circ - 35^\circ - 20^\circ = 125^\circ$$



